



2025-2026 Year End Reporting

NDE Service Desk

NDE.ServiceDesk@Nebraska.gov



Agenda

2025-2026 End of Year

- Due Dates
- Staff Reporting
- CDC-Legacy NDE Portal
- Other Collections-Legacy NDE Portal
- Applications-New NDE Portal
- ADVISER Validation

2026-2027 New School Year

- Course Codes and Clearing Endorsements
- 2025-2026 Follow Up Collection
- Fall Collection

Resources Help!

- Websites
- NDE Service Desk

Due Date: June 15th



2025-2026 Staff Reporting



Consolidated Data Collections
(CDC) & Other Collections



ADVISER Validation (Year End
Collection)

Audit Window: June 30th



2025-2026 Staff Reporting



Consolidated Data Collections
(CDC) & Other Collections



ADVISER Validation (Year End
Collection)

2025-2026 Staff Reporting

Reminders

- Add Completion Dates
- Confirm the Days Worked for Substitutes
- Verify all staff are in the report

Other Helpful Systems

- NDE Staff ID
 - Look up/create Staff IDs
- [Public Certification Lookup](#)
- TEACH Business Partner Portal

NSSRS Validation



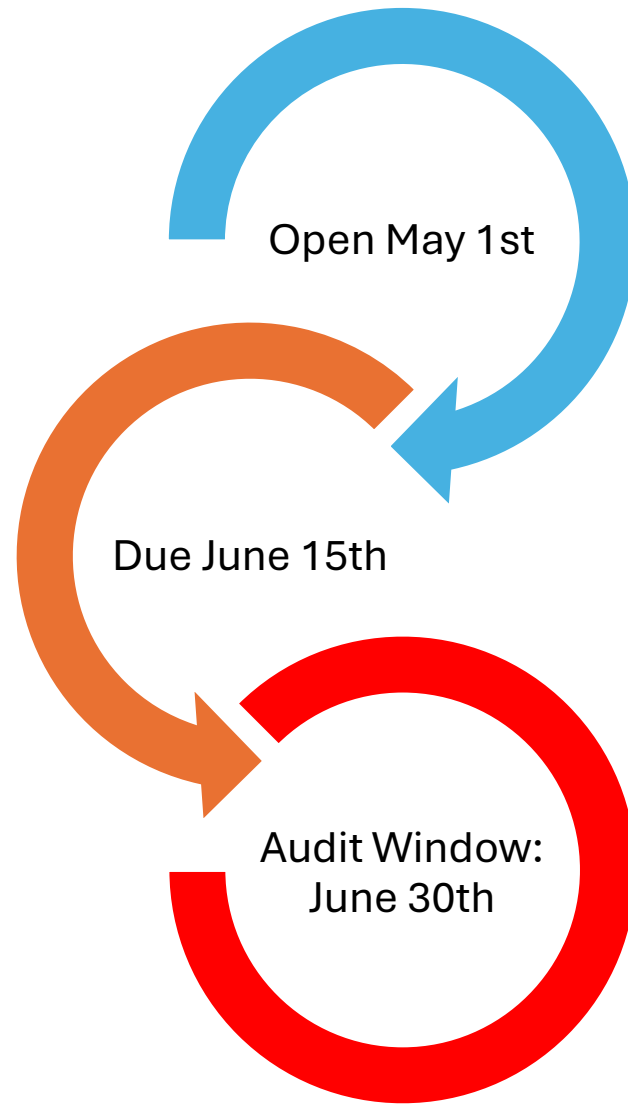
Review Errors

- Warning #594-certificate expiring
- Error #595-Rule 18 & Special Purpose Schools missing email
- Warning #596-Name mismatched
- Warning #597-Max days worked for substitute teacher
- Warning #598-Unusal amount in the salary or benefits

Verification Reports

- Current Certification Report
- Current Personnel Report
- Title I Paraprofessionals
- Teachers Assigned Out of Endorsed Area or Level
- Staff Reporting for GMS SPED IDEA Consolidated Applications
- NEP Teacher Demographics

2025-2026
Consolidated
Data Collection (CDC)



CDC Collections Legacy NDE Portal

Annual Participation Report

Days In Session/Instructional
Program Hours

ESU/District/System/School
Information Report

Collections Open All Year in the CDC

Medicaid in Public
Schools (MIPS)

Superintendent/ESU
Administrator
Transparency Pay
Act

Request to Submit
Data Late or Make
Data Changes

Graduation Cohort
Resolution Request



Other Collections Legacy NDE Portal



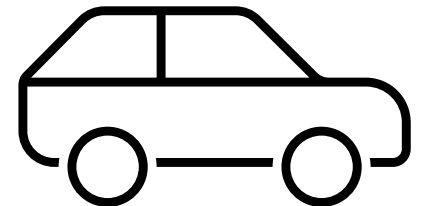
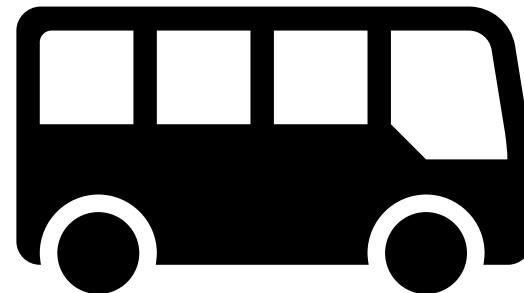
Open
May 1st

Due
June
15th

Audit
Window
June 30

Located in the
Data Collections tab

Pupil Transportation





Moved to the New
NDE Portal

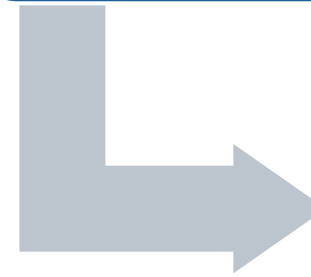
Nebraska
Education Profile
(NEP) Information

Reading
Improvement
Act (previously Nebraska Revised Statute 79-
11,157.01 and Information Related to Learning Disabilities,
Including Dyslexia)

Enrollment
Option Rejection
Report (opens June 1st)

2025-2026 End of Year ADVISER Validation

Open
November
1st



Due June
15th



Audit
Window
June 30th

ADVISER Validation Activation Codes



District

Program-
SPED



Program-
Food

Program-
Discipline



ADVISER Validation Resources

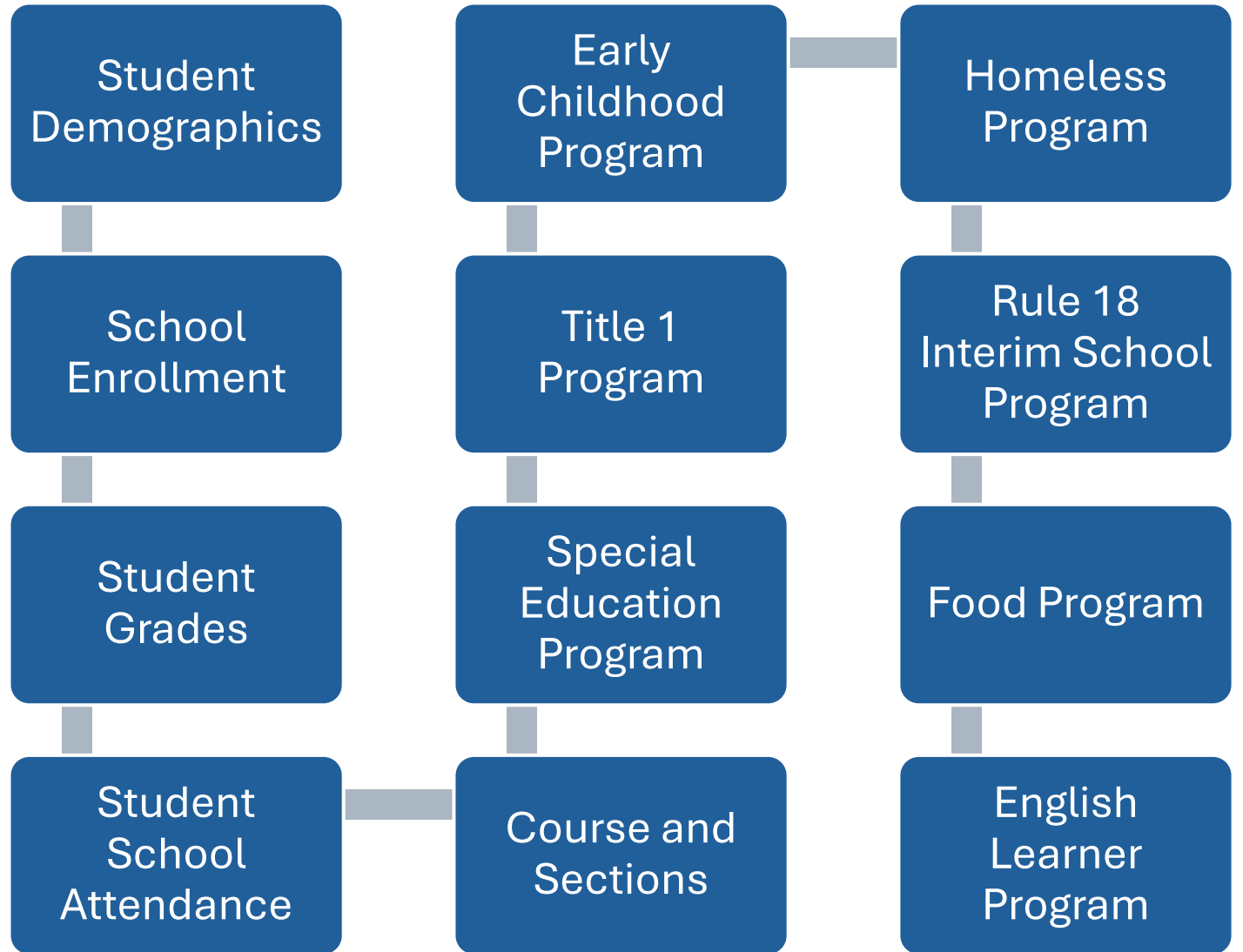
ADVISER Resources

- Data Elements
- Calendar
- Who Reports What
- Systems Involved Student Reporting

Help Topics

- ADVISER Validation
- NDE Coffee Hour
- Resources

End of Year Data Collected

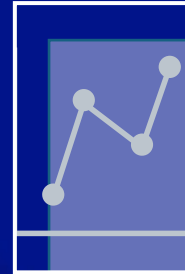


What is Data being used for?



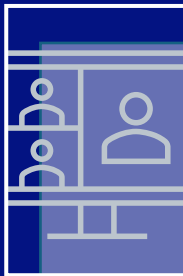
State Aid Calculation

- School Enrollment
- Summer School Attendance



Nebraska Education Profile

- Student Demographics
- Homeless Program



Carl D. Perkins Career & Technical Education Accountability

- Courses and Sections



Medicaid in Public Schools (MIPS)

- Special Education Program



Special Education Exiters

- Special Education Program



AQuESTT and State Assessment

- Student Demographics and Attendance
- School Enrollment
- Student Discipline
- Food Program
- English Learner Program

Data Usage Continued



Cohort Graduation & Dropout Rate Calculation

- School Enrollment
- Homeless Program
- Food Program



High Ability Learner Eligible

- Student Demographic



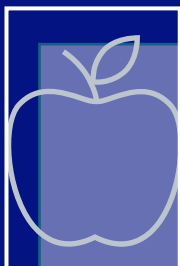
Federal/State Required Discipline

- Student Discipline



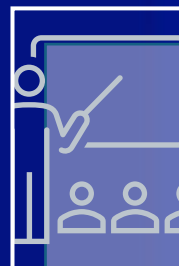
Special Education Discipline

- Student Discipline



Nutrition Services (Direct Certification) & Reduced-Price Lunch Counts

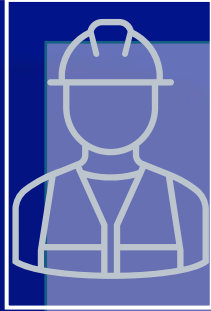
- Food Program



English Learner Participants and Program Study Counts

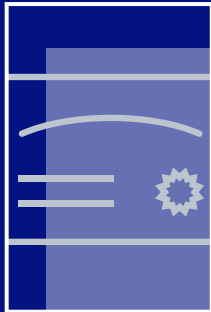
- English Learner Program

More Data Usage



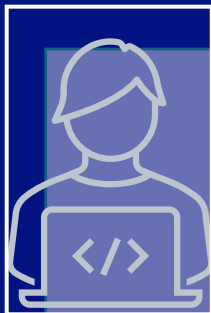
CTE Concentrators, Participants & Program Study Counts

- Courses and Sections



Teacher Endorsement Checks

- Courses and Sections



Instructional Unit Verification

- Courses and Sections

ADVISER Errors

- ! Reminder: Must have the right activation codes on your account to see specific errors for example: Special Education category

New ADVISER Error Attendance/Calendar

818 – Excused Absence For
Disciplinary Action Reason
Reported For Student Without
a Suspension or Expulsion

New ADVISER Error EL/Immigrant

825-Student Reported With
an ELPA Assessment Score
Not Reported As English
Learner

English Learner Reminder

Tested Out in
2024-2025

Moved to
redesignated in
2025-2026

Tested Out in
2025-2026

Leave as
participant
until 2026-2027

New ADVISER Errors Student Enrollment

820 – A Student Reported in ADVISER
Does Not Have a Matching Record in
ADVISER Person ID

821 – Student With Concurrent
Enrollments Exited From One
Enrollment But Not Second

822 – Residency Status Code “10”
Reported for a Resident Student

823 – Residency Status Code “10”
Reported for a Full Time FTE
Student

New ADVISER Errors Special Education

819 – Special Education Student
With Exit Reason SPED11
“Transferred to Another School
District (Moved Known to Be
Continuing)” Without a Following
Special Education Program Record

824 – Special Education Student in
October 1 Child Count Reported at
Multiple Districts

Special Education Reminders

Exiting

- Identify the students
- Ensure enrollment & SPED exits are reported

Verification Reports

- SPED: Special Education Active Student Information
- Special Education Student Exits

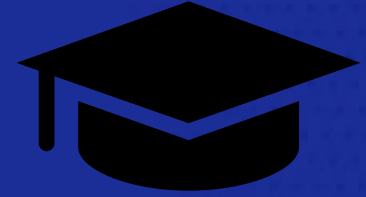
18-21 Year Olds

- Exiting OR
- Continuing services

Due June 30th

- Not in the ADVISER Follow-up Collection

Graduating Student Reminder



Met State
Graduation
Requirements

- Submitted a FAFSA application or waiver
- For all students with a 210 Exit Withdraw Type
- [FAFSA Frequently Asked Questions](#)

Verify Data-Lookups



Student
Lookup

[Enrollment Lookup by ID](#)

[Student Lookup by ID](#)

Student Lookup by Demographics

Special Education Lookup

Program
Lookup

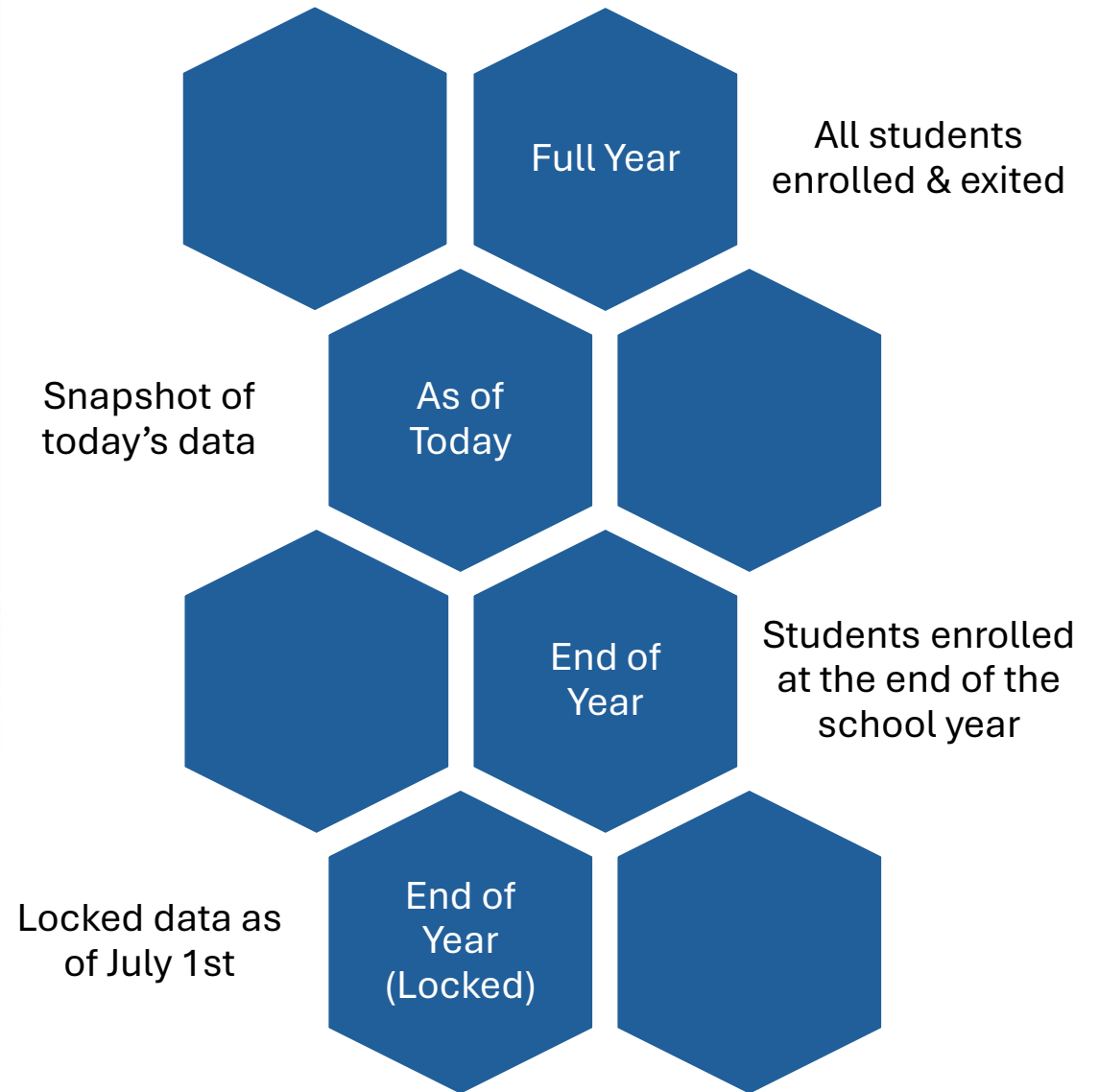
Career Education

Early Childhood

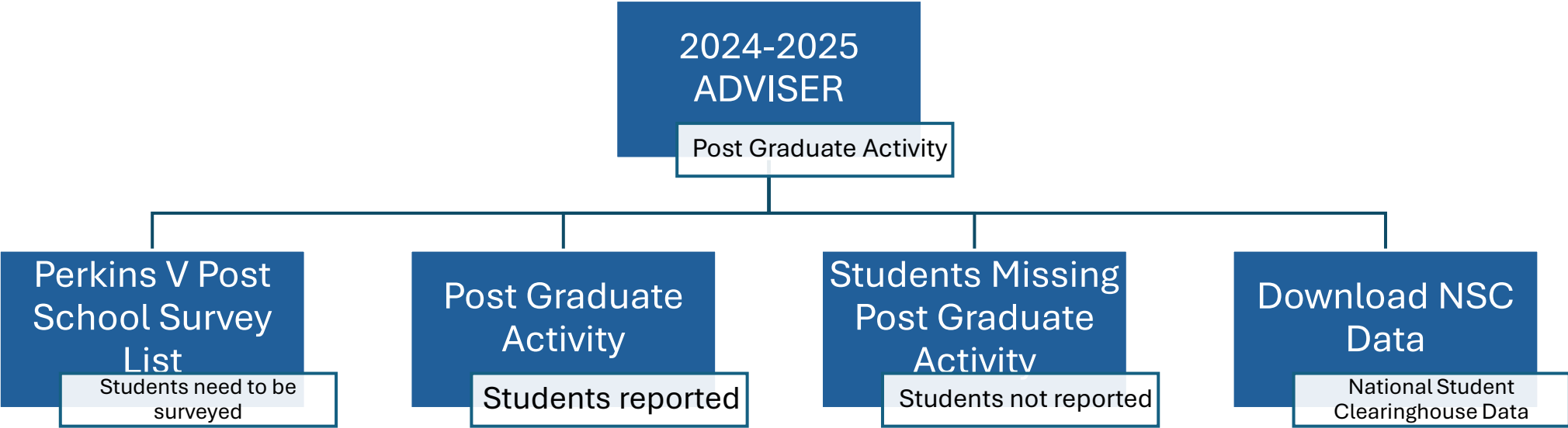
Homeless

Rule 18 Interim Program Schools

Verification Reports- Reporting Windows



Perkins V 24-25 Post School Survey



Students (ages 14 +) exited SPED in
the 2025-2026 school year

SPED Post School Outcomes



District Admin Approval

Errors

Resolved or reviewed



Verification Reports

Reviewed and verified



Admin Approval

Open late June (usually a few days before the 30th)

2026-2027 School Year



Course Codes & Clearing Endorsements

- 2026-2027 Available Now!



2025-2026 Follow Up Collection

- Due: Sept. 15
- Audit: Oct. 2

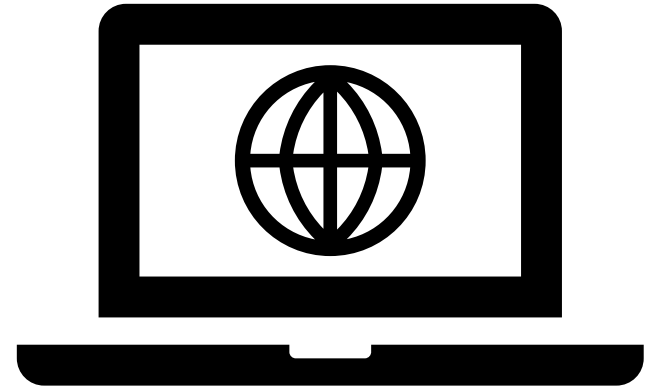


2026-2027 Fall Collection

- Due: Oct. 15
- Audit: Oct. 31

Resources

- ❖ [ADVISER Resources](#)
 - ❖ Calendar
 - ❖ Data Guidance
 - ❖ Program Specific Information
- ❖ [Consolidated Data Collection](#)
- ❖ [Help Site](#)
 - ❖ ADVISER Validation
 - ❖ NDE Coffee Hour
 - ❖ Workday
- ❖ [Staff Reporting](#)



NDE Service Desk

- ❖ NDE.ServiceDesk@Nebraska.gov
- ❖ One ticket per issue
- ❖ Include IDs for a faster response

